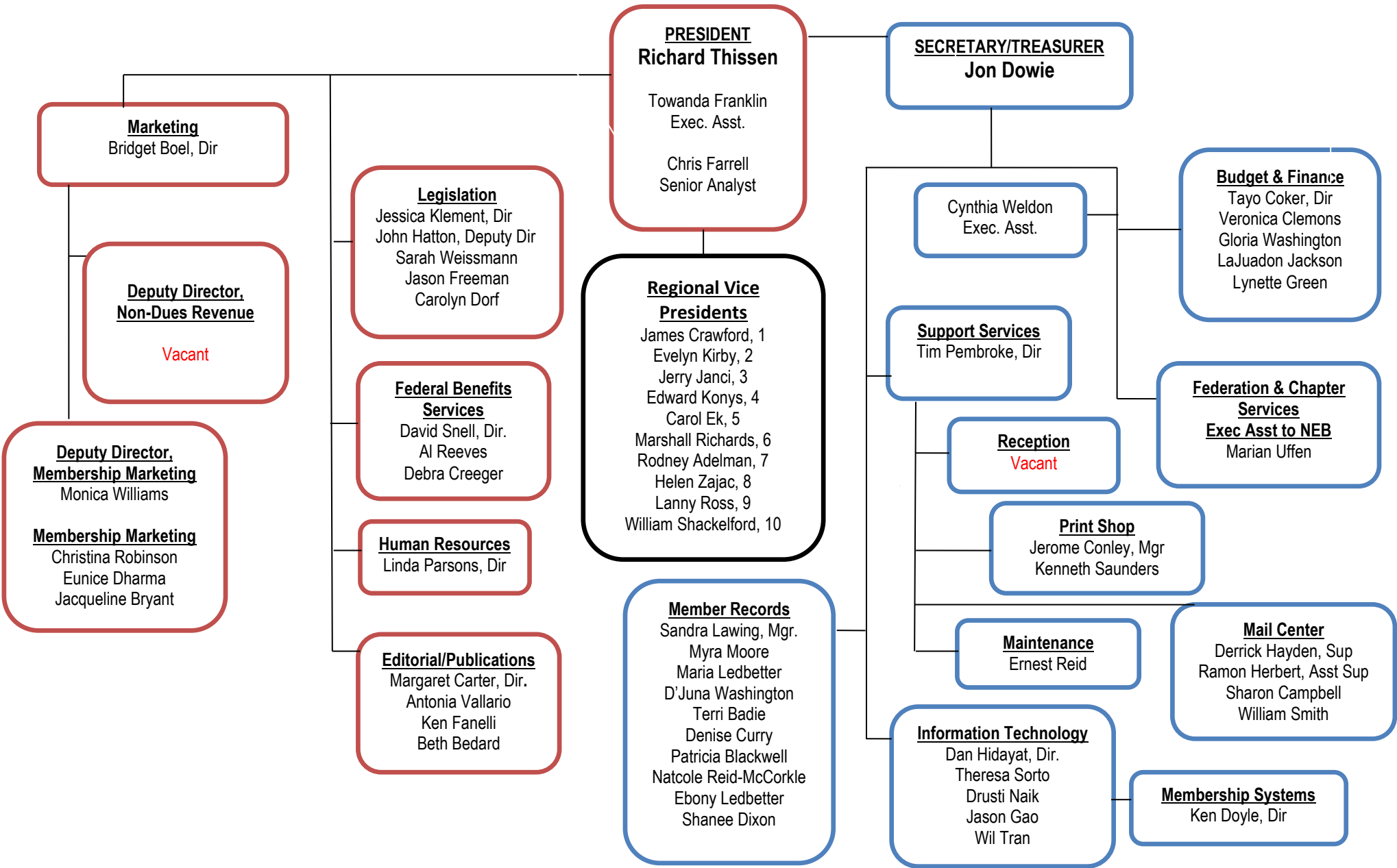


# NARFE Organization Chart

## National Executive Board



## NARFE HEADQUARTERS

606 N. Washington Street • Alexandria, VA 22314-1914

Phone: 703.838.7760 • Fax: 703.838.7785 • Email: [hq@narfe.org](mailto:hq@narfe.org)

---

431	Badie, Terri	255	Thissen, Richard
242	Bedard, Beth	270	Tran, Will
436	Blackwell, Patricia	273	Uffen, Marian
274	Boel, Bridget	254	Vallario, Toni
277	Bryant, Jacqueline	429	Washington-Molder, D'Juna
246	Campbell, Sharon	288	Washington, Gloria
240	Carter, Margaret	263	Weissmann, Sarah
286	Clemons, Veronica	282	Weldon, Cynthia
285	Coker, Tayo	244	Williams, Monica
247	Conley, Jerome	0	Operator
432	Curry, Denise		
276	Dharma, Eunice		
433	Dixon, Shanee	290	Conference Room
248	Dorf, Carolyn	373	MIS Help Desk
281	Dowie, Jon	201	Legislation
284	Doyle, Ken	202	Retirement Benefits
265	Farrell, Chris	772	Recruitment/Retention
241	Fanelli, Ken	203	Budget & Finance
256	Franklin, Towanda		
266	Freeman, Jason		
260	Gao, Jason		
289	Green Lynette		
267	Hatton, John		
252	Hayden, Derrick		
251	Herbert, Ramon		
259	Hidayat, Dan		
287	Jackson, LaJuadon		
264	Klement, Jessica		
341	Lawing, Sandra		
437	Ledbetter, Ebony		
435	Ledbetter, Maria		
342	Moore, Myra		
262	Naik, Drusti		
258	Parsons, Linda		
243	Pembroke, Tim		
271	Reeves, Al		
245	Reid, Ernest		
434	Reid-McCorkle, Natcole		
275	Robinson, Christina		
249	Saunders, Kenneth		
380	Smith, William		
269	Snell, David		
261	Sorto, Theresa		

---

**TOLL FREE NUMBERS**

Member/Chapter Relations  
1-800-456-8410

Membership Recruitment Hotline  
1-800-627-3394

Legislative Hotline  
1-877-217-8234

---

**EMERGENCY - 911**  
(fire, ambulance, etc.)

December 09, 2014

●● FIRST FLOOR ●●

**COMMUNICATIONS**

240 Margaret Carter, Editorial Director  
241 Ken Fanelli, Asst. Editor  
242 Beth Bedard, Graphic Designer  
254 Toni Vallario, Edit. Admin; Scholarship

**SUPPORT SERVICES**

243 Tim Pembroke, Director

**RECEPTION**

760 Vacant, Receptionist

**PRINT SHOP**

247 Jerome Conley, Supervisor  
249 Kenneth Saunders, Printer

**BUILDING MAINTENANCE**

245 Ernest Reid, Maint.

**MAIL/SUPPLY**

252 Derrick Hayden, Supervisor  
251 Ramon Herbert, Assistant Supervisor  
380 William Smith, Clerk  
246 Sharon Campbell, Clerical Assistant

●● SECOND FLOOR ●●

**OFFICE OF THE PRESIDENT**

255 Richard Thissen, National President  
265 Chris Farrell, Senior Analyst  
256 Towanda Franklin, Exec. Sect., Alzheimer's

**IT**

259 Dan Hidayat, Director  
261 Theresa Sorto, Senior Analyst  
262 Drusti Naik, Analyst/Help Desk  
260 Jason Goa, Sen. Applic. Developer  
270 Will Tran, Web Developer

**LEGISLATION**

264 Jessica Klement, Director  
267 John Hatton, Deputy Director  
263 Sarah Weissmann, Grass Roots Mgr.  
266 Jason Freeman, PAC Coordinator  
248 Carolyn Dorf, Legislative Assistant

**FEDERAL BENEFITS SERVICE**

269 David Snell, Director  
271 Al Reeves, Specialist

**HUMAN RESOURCES**

258 Linda Parsons, HR Director

**MEMBERSHIP SYSTEMS MANAGEMENT**

284 Ken Doyle, Director

●● THIRD FLOOR ●●

**MARKETING**

274 Bridget Boel, Director

**NON-DUES REVENUE**

Vacant, Deputy Director

**MEMBERSHIP MARKETING**

272 Monica Williams, Deputy Director  
275 Christina Robinson, Program Manager  
276 Eunice Dharma, Program Manager  
277 Jacqueline Bryant, Rec/Ret Assistant

**MEMBER RECORDS**

341 Sandra Lawing, Manager  
435 Maria Ledbetter, Section Leader  
342 Myra Moore, Researcher  
429 D'Juna Washington-Molder, Dues Withholding  
431 Terri Badie, Representative  
432 Denise Curry, Representative  
433 Shanee Dixon, Representative  
436 Patricia Blackwell, Representative  
434 Natcole Reid-McCorkle, Representative  
437 Ebony Ledbetter, Assistant

●● FOURTH FLOOR ●●

**OFFICE OF THE SECRETARY/TREASURER**

281 Jon Dowie, National Secretary/Treasurer  
282 Cynthia Weldon, Executive Secretary  
273 Marian Uffen, Executive Assistant/Fed/Chap Services (3<sup>rd</sup> floor)

**BUDGET & FINANCE**

285 Tayo Coker, Director  
286 Veronica Clemons, Accounting Supervisor  
287 LaJuadon Jackson, Funds Accountant A  
288 Gloria Washington, Funds Accountant B  
289 Lynette Green, A/P Data Entry Clerk

---

**FAXES**

703 838-7781 1<sup>st</sup> Floor, Communications  
703 838-7782 2<sup>nd</sup> Floor, Legislation  
703 838-7783 3<sup>rd</sup> Floor, Membership  
703 838-7784 4<sup>th</sup> Floor, Budget & Finance  
703 838-7785 2<sup>nd</sup> Floor, Executive Office

*Staff email addresses are first initial, last name@narfe.org. For example, Linda Parsons is lparsons@narfe.org.*