



# NARFE Chapter 0002, Topeka, KS

NATIONAL ACTIVE AND RETIRED FEDERAL EMPLOYEES ASSOCIATION

Meetings at Aldersgate Village in Wesley Hall

7220 SW Asbury Drive, Topeka, KS



## IT IS IMPORTANT



**THAT YOU CALL  
EARLENE JIRIK  
266-5492  
BY  
SATURDAY,  
AUGUST 18TH  
WITH YOUR  
RESERVATION  
AND/OR  
CANCELLATION**

**Menu for  
"Indoor Picnic"  
August 24th**

- Pulled Pork Sandwiches
- Potato Salad
- Baked Beans
- Chips
- Beverage
- Berry Cobbler

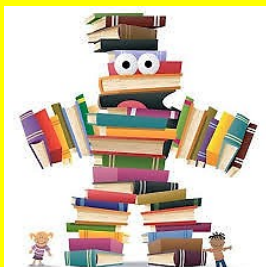
**Cost: \$9.00**

## INVOCATION BY

*Dale Jirik*

**CINDY MILLER  
Alzheimer's  
Association**

**Entertainment  
Nook Sale  
for NARFE  
Alzheimer's  
Research**



**August 24th  
10:30 — 1:30  
in the Parlor**




## AUGUST 2018

From President Sharon Rosenow's Desk    [rosenowsk@gmail.com](mailto:rosenowsk@gmail.com)    640-7317

First we want to welcome our new First Vice-President, Charlotte Pittman. She will take over that position for the rest of the year and hopefully longer. Glad to have you aboard Charlotte! The August meeting will be our indoor picnic, so come enjoy a picnic without bugs! Richard Wike has scheduled some interesting speakers for the rest of the year, so don't forget to put the 4<sup>th</sup> Friday of each month on your calendar so you won't forget your NARFE Luncheon. See you on August 24<sup>th</sup>. **Come early to get the best buys and mingle with friends.**



**AUGUST 10 - 9:30 Executive Board Meeting in Parlor**  
(Our Board Meetings are open to any member)

**AUGUST 24 - SALE of**     
**ALZ CHAIR SUE SAYS** don't forget to bring your checkbook so you can purchase used books, CD's and DVD's at our *Entertainment Nook Sale*. You can start perusing the items as early as 10:30 am and continue until noon with ALL monies going to NARFE/Alzheimer's Research. You will also want to bring your checkbook so you can donate to the Alzheimer's Walk. All donations must be collected and turned in prior to our September meeting.

**SEPTEMBER 2 - CONGRATULATIONS TO DALE AND EARLENE JIRIK**  
70th Wedding Anniversary Celebration from 2-4 pm at Countryside United Methodist Church in the Celebration Center, 3221 SW Burlingame Road, Topeka

**SEPTEMBER 20 - Webinar (see details in Ron Richey's column below)**  
**SEPTEMBER 22 - \*\*\*\*\* Meal Reservation Deadline for September Luncheon \*\*\*\*\***  
**SEPTEMBER 28 - Noon NARFE Luncheon \* Speaker TBD**

From Legislative & Membership Chair, Ron Richey    [ronaldgrich@aol.com](mailto:ronaldgrich@aol.com)    234-4172

NARFE encourages you to vote in the General Election on November 6th. Become acquainted with all the candidates running for office. August is a time for NARFE members to meet their US Senators and US Representative. I recently visited with the staff of Senator Pat Roberts. NARFE'S Legislative Priorities for the month of August:

- ⇒ Support a Modest Pay Increase for Federal Employees in 2019
- ⇒ Prevent Federal Benefit Cuts
- ⇒ Modify Postal Reform Legislation (H.R. 756/H.R. 6076 and S. 2629)

For more information go to <https://www.narfe.org/> then go to:

- Go to Advocacy
- Go to Grassroots Advocacy Month
- Go to Here to log in
- Information and classes are available

Note: More information is available in the August issue of the NARFE (pp. 6 and 7).

If you attend a congressional town hall, community event, or meeting on behalf of NARFE please complete the [Congressional Meeting or Event Feedback Form](#) after any interaction with legislators and staff. When you complete this form, which is located on NARFE's advocacy page under "Surveys," your interactions are recognized by the Advocacy Department staff and ultimately help ensure that NARFE's lobbyists echo your message on Capitol Hill. Your dedication to NARFE and advancing our legislative agenda is appreciated.

When renewing your NARFE membership please sign up for both chapter dues and a NARFE membership. It cost \$40.00 for a new member to join NARFE for a year and you receive all the benefits to the Local chapter and National Chapter. On your renewal notice you may make a choice. You may join the National chapter for \$40.00 or both the Local Chapter and National Chapter for \$51.00. **NOTE TO RETIREES** - you may sign up for the Dues Withholding option cost \$3.75 a month for both chapter dues and a NARFE membership.

Check out NARFE Federal Benefits Institute at <https://www.narfe.org/FederalBenefitsInstitute/> With this member-only resource you are guaranteed to be up on any changes to benefits, rules surrounding the Thrift Savings Plan (TSP), survivor benefits and much more. New programs are added nearly every month and its extensive archive of recorded programs (22 to date) can be viewed at your leisure. **The next live webinar is 2 p.m. ET on Thursday, September 20 – Retirement Forms: The Devil's in the Details presented by James Marshall**

### **September 1 - December 31, 2018 Membership Drive \* What You Can Win!**

Recruiters will receive \$10 for each new member, current OR retired, who joins between September 1 and December 31, 2018. (Applications must be postmarked, and calls or website joins must be received no later than December 31, 2018.) At the August 24, 2018 NARFE meeting I will have information and membership applications in the back of the room to give to prospective members, I will have my computer so we may look up any NARFE information.

**NARFE CHAPTER 0002 MINUTES**

**JULY 27, 2018 - ALDERSGATE VILLAGE**

President Sharon Rosenow, called the meeting to order. **Sue Wike** gave the invocation, followed by the flag salute. **Program – Nick Sulte, Representative from Healthwise 55**, spoke about the Shingles Vaccine. The new shingle vaccine Shingrix is currently the one you need to have. If you received Zostavax ask your physician about the new vaccine. Further information is available through Stormont Vail Health, Healthwise 55 or your personal physician. **Earlene Jirik** – there were 27 members in attendance. Door prizes were given out: Linda Smith won a tote bag with water bottle and Gwen Ketter won a picnic basket (which she had provided). Linda & Gwen exchanged their door prizes). Please let Earlene know if you plan to attend the next meeting. **Gwen Ketter, Secretary** – The June minutes (Thanks to Joanne Miller) were published in the newsletter. Minutes were approved as printed. No new information to provide except that the Federation has submitted their Bylaws to National for approval. After that Topeka chapter will check to make sure we are in compliance and submit our updated bylaws. **Ron Miller, Treasurer** – we have \$1900.57. The Life Account has a total of \$1200. **Richard Wike, 2nd Vice-President**, announced that our August meeting speaker will be Cindy Miller of Alzheimer's Association. She will speak on the approaching Walk for Alzheimer's Research coming in September. **Jim Miller, PAC Chair** – Absent. Sharon reported that we have 2 sustainers, 38 cert and have raised \$2805 for PAC. **Ron Richey, Legislative** – Ron issued a written report for inclusion in the newsletter. **Jo Burenheide, Good Cheer Chair** – Get Well card was sent to Anna Steinbock, who had knee replacement surgery. Sympathy Cards were sent to Steve Dempewolf on the death of his brother and to the Family of Herbert Bulk who passed away July 16, 2018. **Joanne Miller, Editor** – Newsletter deadline is Friday, August 3rd. Entertainment/Book Sale Friday August 24th,

will be across the hall and will begin at 10:30. **Sue Wike, Alzheimer's Chair** – Alzheimer's Walk is September 29th. We are looking for walkers and those who cannot walk but wish to donate to the cause. The 50/50 Drawing was held; winners were: \$5.00 – Sharon Rosenow, \$4.00 – Navella Richey (donate in memory of George Spotts) and \$3.00 – Ron Richey. All money was donated back to Alzheimer's **New Business** - Dale Jirik announced that Charlotte Pittman is joining the Executive Board as the 1st Vice-President **Executive Committee Meeting** – August 10<sup>th</sup> **Chapter Meeting** – August 24<sup>th</sup> Meeting adjourned at 1:27 PM. *Respectfully submitted: Gwendolyn Ketter, Secretary*

**THE VERY FIRST MEMORY WALK WAS IN 1989**



**Join the fight for Alzheimer's First Survivor  
TOPEKA WALK**

**SATURDAY, SEPTEMBER 29**

8:00 a.m. Registration @ Shelter House 1  
"Beautiful" Lake Shawnee  
9:00 a.m. **Promise Garden Ceremony**  
9:15 a.m. Walk Begins

Join TEAM NARFE MEMBERS as we walk to end Alzheimer's, a disease that devastates millions of families across the country and the 40,000 plus individuals/family members/caregivers affected by it in the 37 counties served in Northeast Kansas.

**Chapter 0002 Officers**

President	Sharon Rosenow	640-7317
1st Vice President	Charlotte Pittman	845-6819
2nd Vice President	Richard Wike	783-8122
Secretary	Gwendolyn Ketter	220-7196
Treasurer	Ron Miller	554-5313
Member-At-Large	Mary Harms	249-0511
Member-At-Large	Barbara McLain	272-3407

**Other Contacts**

<b>Service Officer</b>	<b>Acting Jim Miller</b>	<b>478-0651</b>
Newsletter Editors	Joanne & Ron Miller	271-8117
Alzheimer Chair	Sue Wike	783-8122
Publicity	Earlene Jirik	266-5492
Good Cheer	Jo Burenheide	272-8971
Legislative/Membership	Ron Richey	234-4172
PAC Chair	Jim Miller	478-0651

NON-PROFIT ORG.  
US PAID POSTAGE  
TOPEKA, KANSAS  
PERMIT NO. 525

National Active & Retired  
Federal Employees Association  
2632-b SW Arrowhead Road  
Topeka, KS 66614-2497